



AgKNX Truckbed Bale Spear

OPERATOR'S MANUAL

**Return
WARRANTY REGISTRATION
(p. 21) within 15 days of
receiving this manual.**

READ AND UNDERSTAND ALL PARTS OF THIS MANUAL BEFORE USING THIS PRODUCT. BE ALERT TO ALL SAFETY WARNINGS DENOTED BY THE ABOVE SYMBOL. FAILURE TO OBEY SAFE PRACTICES CAN RESULT IN **DEATH, DISMEMBERMENT** AND OTHER SERIOUS INJURY.



Table of Contents

ABOUT THIS MANUAL	3
SAFETY	3
SETUP	4
OPERATION	8
MAINTENANCE	8
TROUBLESHOOTING	8
WARRANTY INFORMATION	9

Dear Owner/Operator,

Thank you for choosing to partner AgKNX, our brand of high quality agricultural and industrial equipment based in Golden, Colorado.

We are proud to supply this gooseneck/truckbed bale spear that has been rigorously tested and vetted by experienced engineers and operators alike.

We support our products and our customers, so if you have any questions or comments please contact us.

Thank you and happy bale moving!

READ THIS MANUAL ENTIRELY BEFORE USING YOUR EARTH AUGER!

If you have any questions about anything in this manual, contact us before using the earth auger. This equipment can be extremely dangerous if not handled properly.

Warranty

To activate your warranty, complete the registration form on the last page of this manual or register online. Please read and understand the terms of the warranty. Unauthorized modifications of equipment and improper use void the warranty.

SAFETY

This manual, and the equipment itself, follows a safety code system as follows:

⚠ DANGER	"Danger" indicates situations that if not properly handled <u>will</u> result in death or dismemberment.
⚠ WARNING	"Warning" indicates situations that could result in serious injury or death if proper precautions are not followed.
<u>NOTE</u>	"Note" indicates important information that is not necessarily a safety issue but is important to maintaining equipment.

All operators, whether owners or not, must have:

- Read and understood the manual
- Understands how to use the bale spear and the truck

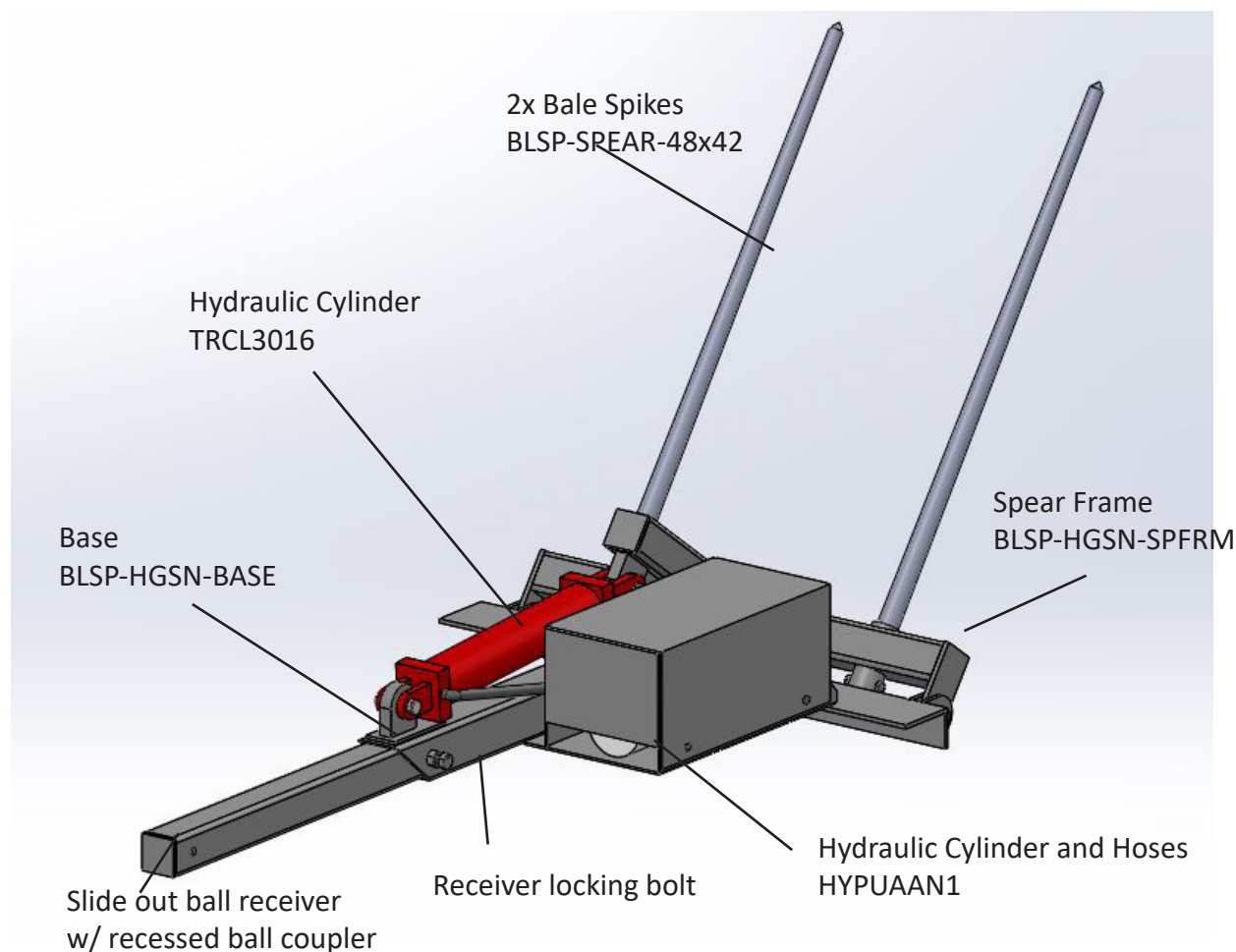
⚠ DANGER

Most injuries result from carelessness or unfamiliarity with the equipment, not from equipment failure or random accidents. Thus, **by being alert and understanding safe practices we can eliminate almost all injuries.**

Read the following list of key practices that reduce the danger of being injured or terminated by this machine.

- Impalement Risk: always be away of the spear position and objects that may be around your vehicle, especially when in reverse.
- Keep spears in the most upright position possible when not spearing a bale.
- Do not use bale spears for anything other than transporting hay bales.
- Be aware of pinch points between moving parts.
- Leaks in hydraulic hoses and fittings can be small enough to be invisible, but powerful enough to penetrate the skin, which can cause gangrene and, in sever cases, death. Check for hydraulic leaks with a piece of wood or cardboard, not yourself.
- Check all fasteners to ensure parts will not come unattached.

Review the diagram below and be sure you have all components.

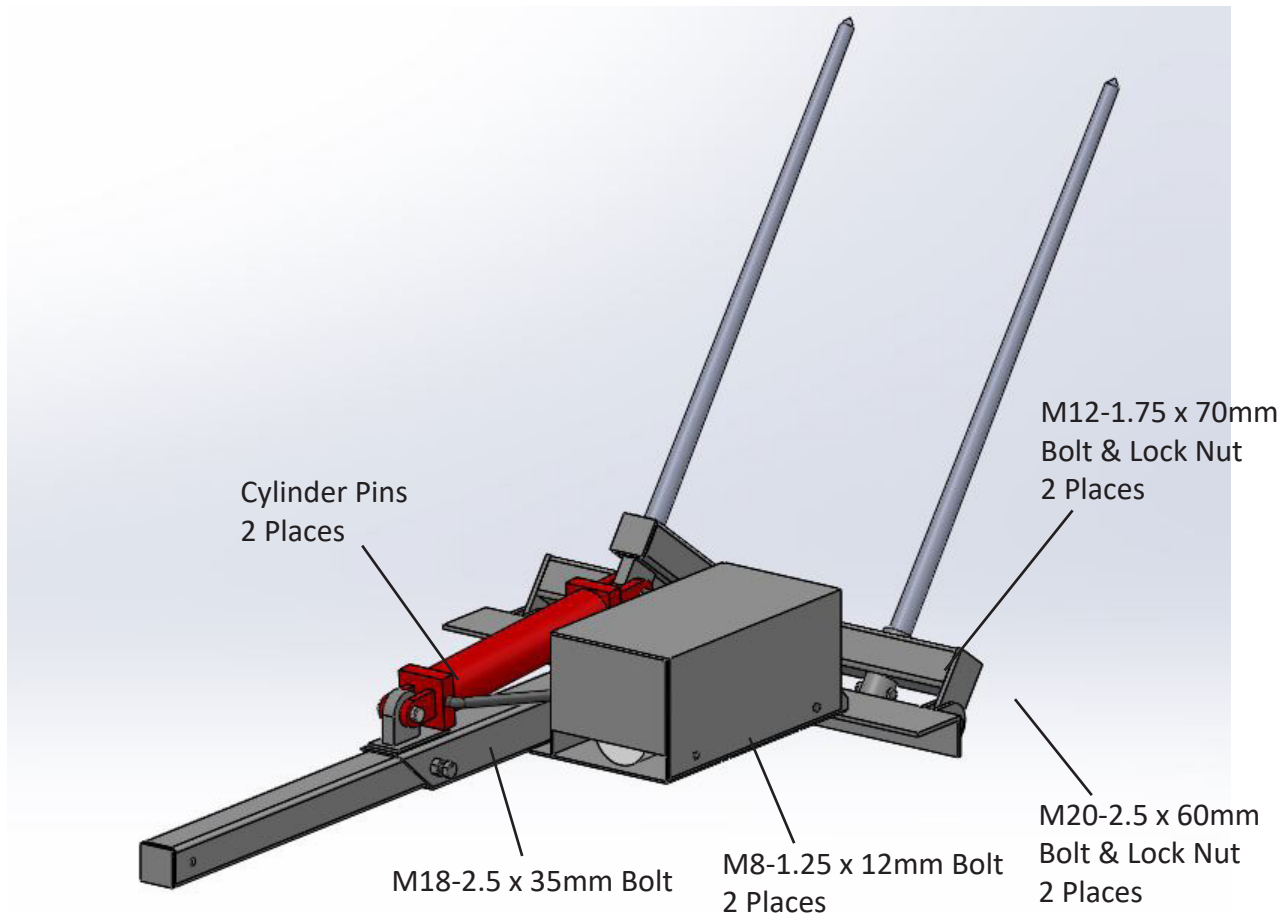


Electrical Kit:

1	Power connector w/ 20 ft of cables <ul style="list-style-type: none"> • 2x: 20 ft of 4 ga wire (one black, one red) • 4 Gauge power connector
2	200 Amp Breaker
3	4x: 4 gauge, 5/6" battery eye terminal

In addition to the principle components, be sure you have the following hardware:

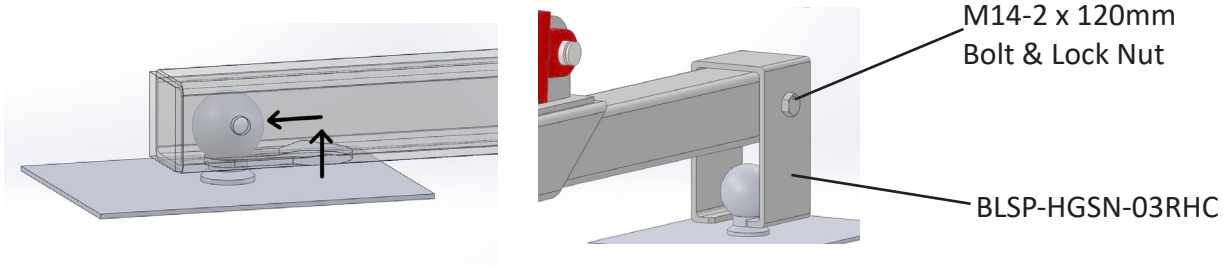
Fasteners:



Frame Installation

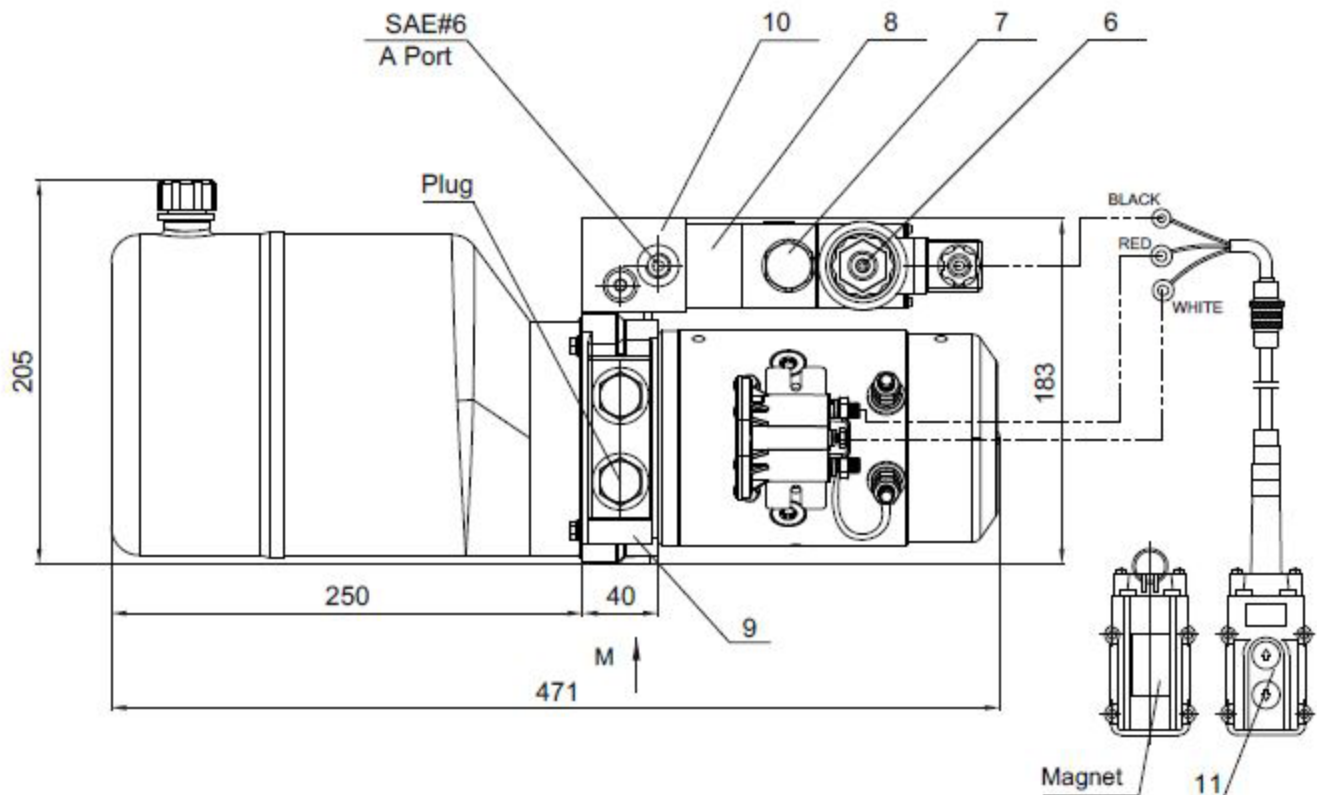
This bale spear is for use with truckbeds that have a 2-5/16" ball mounted for gooseneck trailers. It can be used in box truckbeds, or flatbeds, with exposed or recessed balls. It can accommodate balls that are 40-54" from the rear of the bed. If you do not have a gooseneck ball, see our adaptor for mounting directly to the frame, BLSP-FBBK-ASM.

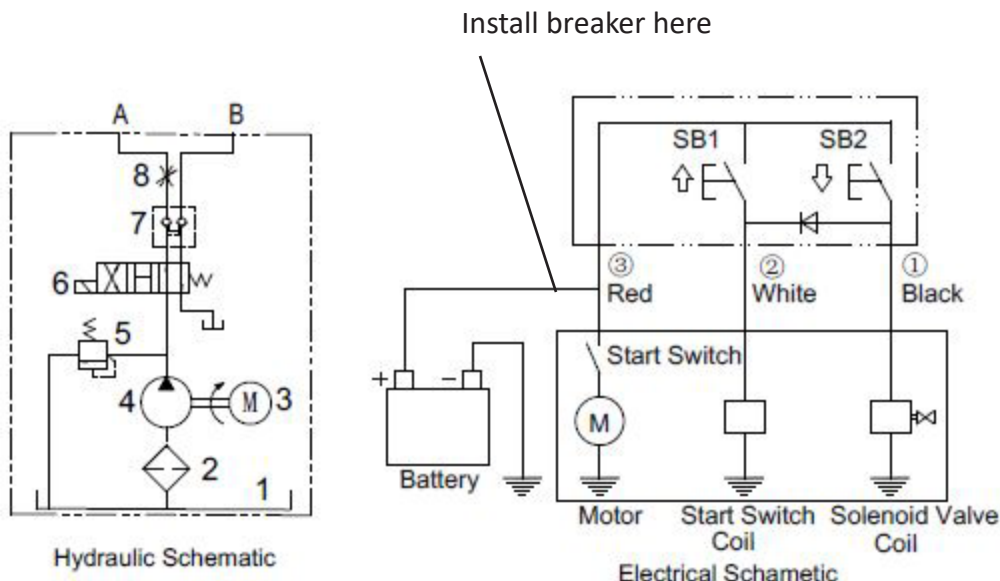
1. Place the base frame on the truckbed with the angle iron securely against the rear of the truckbed. Do NOT use with a tailgate. Refer to your truck owners manual for tailgate removal instructions.
2. Slide the Slide out receiver out from the frame and place it over the hitch ball, then slide it in as far as it will go. The bale spear frame should be pulling itself together between the ball and the rear of the truckbed. If you have a recessed gooseneck ball, use part BLSP-HGSN-03RHC on the end of the ball receiver.
3. Tighten the Receiver Locking Bolt and check that the frame is firm on the truckbed and does not have room to move around. Make sure the angle iron is still firmly against the truckbed.



Electrical Installation

1. Identify part 1 of the electrical kit, 20 ft of 4 gauge wire with a power connector on one end. This is to be routed from the truckbed to your truck battery (or auxiliary battery). Take care to avoid routing it near moving parts, exhaust parts, or on a path that is subject to damage. Fasten with the zip ties provided.
2. Connect the red cable to the positive terminal on your battery.
3. It is recommended to mount the power connector on the driver-side, inside wall of the box, near the wheel well, below the top rail of the box. This is a convenient location to connect the power connector that comes on the power unit.
4. Connect the 200 Amp power breaker (part 2 of the electrical kit) inline on the positive wire going to the hydraulic power unit's motor.





Hydraulic Installation (if not already filled and purged)

1. Check that all fittings are tight. Use thread dope / pipe sealing compound for fittings without o-rings. Do not use thread tape as pieces of it can break off and affect hydraulic components.
2. Fill the hydraulic reservoir with AW-32 (or AW-46 in hot climates), or ATF until 2 inches below the top.

NOTICE:

Do not mix different types of hydraulic fluids. For example, If you use AW (anti-wear) hydraulic fluid one time, don't add ATF to it to top it off. We do NOT recommend using tractor fluid in cold weather.

3. Cycle the cylinder up and down multiple times until all air is purged. Keep an eye on fluid level in the reservoir and add more if the fluid if the level drops too low. Filling the cylinder requires a notable amount of fluid and more may need to be added once the cylinder is full.

OPERATION

1. Approach bales with spears as close to mid-height of the bale as possible.
2. Approach the flat side of round bales.
3. When lifting bales, watch to make sure that the bale does not interfere with your truckbed, which could cause damage.
4. The weight and position of large bales puts a large amount of leverage on the truck. This affects steering and handling, so drive slowly and carefully to avoid losing control. Also be aware of the forces put on rear suspension; you may want to stiffen rear suspension of the load of bales is causing it to bottom out.
5. When unloading bales, drive straight forward until the spears are clear of the bale.

MAINTENANCE

- Check hydraulic fluid level every 2-3 months. If fluid is low inspect for leaks.

⚠️WARNING

Leaks in hydraulic hoses and fittings can be small enough to be invisible, but powerful enough to penetrate the skin, which can cause gangrene and, in severe cases, death. Check for hydraulic leaks with a piece of wood or cardboard, not yourself.

- Inspect all fasteners: be sure they are tight. Replace if excessively worn or rusted.
- Check battery terminals, cable connections and power connector for corrosion. Use a wire brush to clean off corrosion, or replace parts corroded beyond repair.
- Store in a dry place off the ground. Placing on wood blocks helps moisture escape, preventing rust on the frame or damage to the components.

TROUBLESHOOTING

Spears not lifting or lowering

- Check that there is sufficient hydraulic fluid. If it is jerky or sputtering it likely needs more fluid.
- Check that electrical connections are in proper contact and not corroded. Reinstall and/or clean any connections exhibiting problems.
- Check for fluid leaks. Leaks can cause a loss of power to the spears.

Motor not responding to remote

- Check that electrical connections are in proper contact and not corroded. Reinstall and/or clean any connections exhibiting problems.
- Refer to wiring diagram to be sure all connections are on the correct posts.
- Check in-line circuit breaker. If too much current was drawn the breaker will switch and needs to be reset.

AgKNX warrants its products, under normal use and maintenance, to be free from defects in material and workmanship as specified below from the purchase date.

You must return this warranty page with the purchase date for the warranty to be effective. Warranty Period begins on the purchase date specified on this warranty page. Keep a copy for your records.

Warranty: 1 Year parts warranty usable by original purchaser.

1. During the applicable warranty period, AgKNX will provide replacement parts determined to be defective.
2. Parts may not be returned without written authorization from AgKNX.
3. Some components are subject to the inspection and warranty of the contracted manufacturer. Delays in a warranty determination can be expected while AgKNX awaits their decision.
4. This warranty is void if any attempt is made to make field repairs to hydraulic motors or planetary gears.
5. To make a claim under this warranty, first contact dealer purchase from, if applicable. The Warranty Claim Form must be completed and submitted. If parts must be returned, written authorization from AgKNX must be obtained. All warranty claims must include detailed information regarding make and model of vehicle on which the AgKNX product was mounted, hours of use, fluids used and hours of use of fluids, description of events that led up to the failure, and any other information helpful in reviewing the warranty claim.
6. All warranty returns (if applicable) must be prepaid. The freight charge will be credited if the parts are determined to be defective.
NOTE: Hydraulic components must arrive with all ports sealed from dirt and moisture. If a motor arrives with open ports, the warranty is void and no inspection will be made.
7. Products that show wear from normal use, have been improperly operated, damaged by accident or negligence, field repaired, altered or modified are not considered defective in material and workmanship and are not covered by this warranty.
8. This warranty does not apply to parts subject to normal wear or to damage caused by the failure to perform recommended maintenance or to replace worn parts.
9. This warranty shall not obligate AgKNX to bear any cost of labor for field repair, replacement, testing, or adjustment nor for damage caused by accident, abuse, misuse, or environmental elements.
10. Parts repaired or replaced are covered by this warranty only for the remainder of the original warranty.
11. AgKNX may change its specifications and designs at any time.
12. Any information found to be dishonest in the claim file will void warranty.

This warranty is exclusive. It does not extend beyond the duration specified. No employee, dealer, salesman, or representative is authorized to change this warranty in any way or grant any other warranty. AgKNX shall not be liable for any consequential, incidental, or punitive damages, losses, or expenses, including those resulting from or caused by any defects.

Keep this page to reference
warranty information

WARRANTY VOID IF REGISTRATION IS NOT MAILED WITHIN 15 DAYS OF RECEIVING ITEM.

Fill out this page and mail to the address below.

BLSP-HGSN Serial Number (located on main beam) _____

Purchase Date ____ / ____ / ____

Purchased From: Purchaser: _____

Owner's Name & Address: _____

City: ST: Zip Code: _____

Phone: _____ Email: _____

Attach a Copy of Proof of Purchase

Acceptance of responsibility: All items must be truthfully marked for warranty

___ I (Purchaser) have read operators manual and Limited Warranty or someone has read/and explained all instructions to me.

___ I understand this warranty does not cover any labor and that all disputes will be settled by binding arbitration.

___ Warranty void if any attempt to repair or replace defective parts has been made by unauthorized personnel.

___ I have received my Owner's Manual and fully understand the stipulations.

___ I understand that I alone am responsible for proper maintenance, care and safe operation of this bale spear.

___ Received and read or will read prior to use the safety warnings

___ Specifications accepted

___ Controls understood

___ Maintenance Requirements understood

___ Storage of system

___ I (purchaser) also understand that persons not familiar with the operation of this equipment should not be allowed to use it.

___ Children especially should not operate or be near equipment.

___ ANYONE OPERATING EQUIPMENT SHOULD HAVE READ ALL EQUIPMENT OPERATIONS MANUALS AND SAFETY MANUALS.

Is this bale spear used in a business

NO ___ YES, If yes, business type: _____

Owners Signature: _____ Date: ____ / ____ / ____

It is recommended that a copy of the registration be given to the seller.

You must sign this warranty and mail copy to

AgKNX, 15000 W 44th Avenue Suite B.
Golden, CO, 80403.

NOTE: The Manufacturer may refuse warranty of any kind unless AgKNX receives a completed, legible and signed warranty registration. It is the responsibility of the purchaser to assure that this

Send warranty registration to

AgKNX
15000 W 44th Ave Ste B
Golden CO 80403

within 15 days of purchase

Truckbed Bale Spear

WARRANTY CLAIM FORM

AgKNX
15000 W 44TH AVE STE B
GOLDEN, CO 80403
303-278-0664
SALES@AGKNX.COM

PURCHASE DATE: _____

CLAIM DATE: _____

SERIAL #: _____

CUSTOMER ADDRESS & INFORMATION

TEL _____

EMAIL _____

TRUCK INFORMATION

BED TYPE _____

RECESS OF BALL (IN) _____

DIST BALL - BED END (IN) _____

HYDRAULIC FLUID _____

CLAIM INFORMATION

BALE SIZE: LENGTH _____", DIAMETER _____", TYPE _____, DRY / WET _____

HOURS USED _____

ALL FASTENERS TIGHT PRIOR TO INCIDENT _____(Y/N) OEM PINS & BOLTS _____(Y/N)

HYDRAULIC PARTS SHOW NO SIGN OF WEAR _____(Y/N)

DESCRIPTION OF DEFECT OF WORKMANSHIP: (provide details of what occurred leading to, during, and after part failure)

Requesting return for inspection of the following part(s): (include quantity, part #, description)

DEALER NAME & LOCATION

I UNDERSTAND THE WARRANTY AGREEMENT

PRINT NAME: _____

SIGNATURE: _____

If you need to file a warranty claim,
send this page to

AgKNX Warranty Claim
15000 W 44th Ave Ste B
Golden CO 80403



Skid Steer Earth & Rock Augers



3-Point Post Hole Diggers
Category 0, 1, 2 sizes available



Portable Hydraulic Power Packs



Hydraulic Tanks
5, 15, 25 gallon options



PTO Drivelines and accessories



Hydraulic Cylinders, pumps,
valves and more

*We carry all this and much more!
Contact us for details.*

